

Tear Sheet
Model Seattle on rose by KARCHER DESIGN

KARCHER
DESIGN

GERMANY

contact our US office
Karcher Design USA
Tukwila, Seattle
+1 844 858 2033
order@karcher-design.com



Seattle

Finish: satin stainless steel (71)

To suit standard 2 1/8" door prep



Seattle- UER 46Q
2 5/8 x 2 5/8 x 7/16"



Seattle- UER 46
Ø 2 5/8 x 7/16"

Features UER46Q and UER46

- 3 piece rose
- concealed bolt-through fixing
- sprung
- door range 1 1/4" (31 mm) - 2" (51 mm) standard
- T- and Lip-Strike with dust box
- stainless steel faceplate
- backsets: 2 3/8" (60 mm) or 2 3/4" (70 mm)
- functions: Passage (PAS), Privacy (PRI), full dummy (DUM), dummy left (DUM L), dummy right (DUM R)
- available with UL-Latch
- 28° latch with attached face plate
- rate of satin stainless steel 304
- hub 5/16" (8 mm)
- door prep 2 1/8"
- available finish: satin stainless steel

product code square

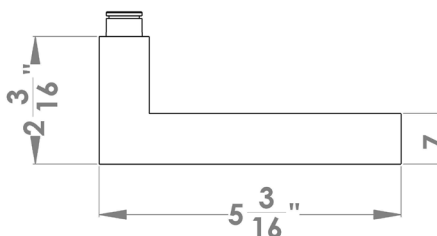
UER46Q PAS60 71	passage 2 3/8" backset
UER46Q PAS70 71	passage 2 3/4" backset
UER46Q PRI60 71	privacy 2 3/8" backset
UER46Q PRI70 71	privacy 2 3/4" backset
UER46Q DUM 71	full dummy
UER46Q DUML 71	half dummy left
UER46Q DUMR 71	half dummy right
UEDBQ 71	deadbolt to add to passage

round

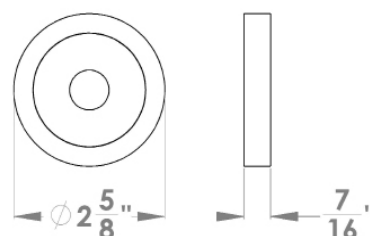
UER46 PAS60 71	passage 2 3/8" backset
UER46 PAS70 71	passage 2 3/4" backset
UER46 PRI60 71	privacy 2 3/8" backset
UER46 PRI70 71	privacy 2 3/4" backset
UER46 DUM 71	full dummy
UER46 DUML 71	half dummy left
UER46 DUMR 71	half dummy right
UEDB 71	deadbolt to add to passage
UEDBA 71	deadbolt keyed alike

specification details

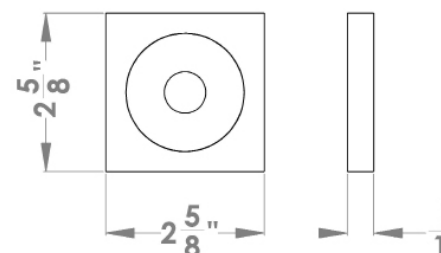
lever



round rose



square rose



Please note: Karcher Design products are designed and measured in metric. Imperial measurements are close approximations to the actual metric dimensions



Seattle

Finish: oil rubbed bronze (81)

To suit standard 2 1/8" door prep



Seattle- UER 46Q
 2 5/8 x 2 5/8 x 7/16"

product code square

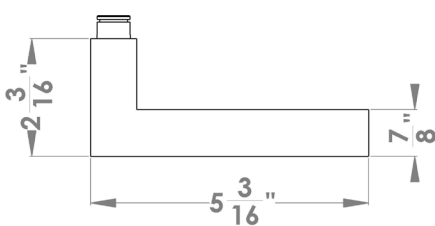
UER46Q PAS60 81	passage 2 3/8" backset
UER46Q PAS70 81	passage 2 3/4" backset
UER46Q PRI60 81	privacy 2 3/8" backset
UER46Q PRI70 81	privacy 2 3/4" backset
UER46Q DUM 81	full dummy
UER46Q DUM L 81	half dummy left
UER46Q DUM R 81	half dummy right
UEDBQ 81	deadbolt to add to passage

Features UER46Q

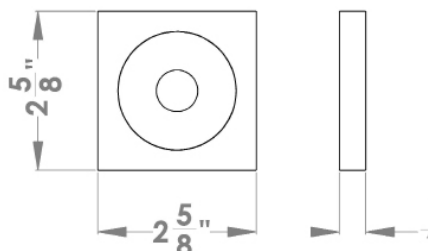
- 3 piece rose
- concealed bolt-through fixing
- sprung
- door range 1 1/4" (31 mm) - 2" (51 mm) standard
- T- and Lip-Strike with dust box
- stainless steel faceplate
- backsets: 2 3/8" (60 mm) or 2 3/4" (70 mm)
- functions: Passage (PAS), Privacy (PRI), full dummy (DUM), dummy left (DUM L), dummy right (DUM R)
- available with UL-Latch
- 28° latch with attached face plate
- rate of satin stainless steel 304
- hub 5/16" (8 mm)
- door prep 2 1/8"
- available finish: oil rubbed bronze

specification details

lever



square rose



Tear Sheet
Model Seattle on rose by KARCHER DESIGN

KARCHER
DESIGN

GERMANY

contact our US office
Karcher Design USA
Tukwila, Seattle
+1 844 858 2033
order@karcher-design.com



Seattle

Finish: polished stainless steel (72)

To suit standard 2 1/8" door prep



Seattle- UER 46Q
2 5/8 x 2 5/8 x 7/16"

product code
square

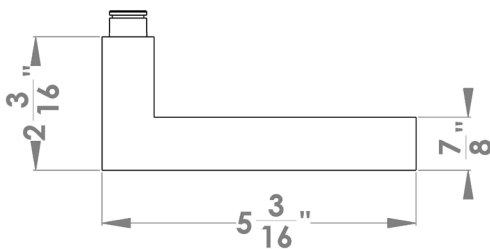
UER46Q PAS60 72	passage 2 3/8" backset
UER46Q PAS70 72	passage 2 3/4" backset
UER46Q PRI60 72	privacy 2 3/8" backset
UER46Q PRI70 72	privacy 2 3/4" backset
UER46Q DUM 72	full dummy
UER46Q DUM L 72	half dummy left
UER46Q DUM R 72	half dummy right
UEDBQ 72	deadbolt to add to passage

Features UER46Q

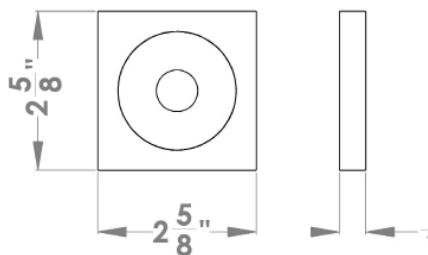
- 3 piece rose
- concealed bolt-through fixing
- sprung
- door range 1 1/4" (31 mm) - 2" (51 mm) standard
- T- and Lip-Strike with dust box
- stainless steel faceplate
- backsets: 2 3/8" (60 mm) or 2 3/4" (70 mm)
- functions: Passage (PAS), Privacy (PRI), full dummy (DUM), dummy left (DUM L), dummy right (DUM R)
- available with UL-Latch
- 28° latch with attached face plate
- rate of satin stainless steel 304
- hub 5/16" (8 mm)
- door prep 2 1/8"
- available finish: polished stainless steel

specification details

lever



square rose



Please note: Karcher Design products are designed and measured in metric. Imperial measurements are close approximations to the actual metric dimensions



Seattle

Finish: cosmos black (83)

To suit standard 2 1/8" door prep



Seattle – UER46Q
2 5/8 x 2 5/8 x 7/16"

product code square

UER46Q PAS60 83	passage 2 3/8" backset
UER46Q PAS70 83	passage 2 3/4" backset
UER46Q PRI60 83	privacy 2 3/8" backset
UER46Q PRI70 83	privacy 2 3/4" backset
UER46Q DUM 83	full dummy
UER46Q DUML 83	half dummy left
UER46Q DUMR 83	half dummy right
UEDBQ 83	deadbolt to add to passage
UEDBQ A 83	deadbolt keyed alike



Seattle – UER46
Ø 2 5/8 x 7/16"

product code round

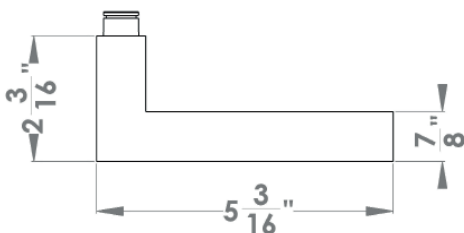
UER46 PAS60 83	passage 2 3/8" backset
UER46 PAS70 83	passage 2 3/4" backset
UER46 PRI60 83	privacy 2 3/8" backset
UER46 PRI70 83	privacy 2 3/4" backset
UER46 DUM 83	full dummy
UER46 DUML 83	half dummy left
UER46 DUMR 83	half dummy right
UEDB 83	deadbolt to add to passage
UEDB A 83	deadbolt keyed alike

Features UER46Q and UER46

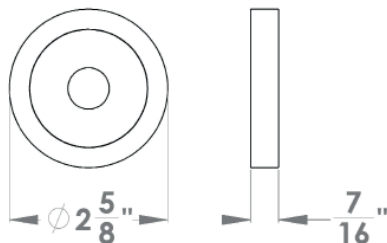
- 3 piece rose
- concealed bolt-through fixing
- sprung
- door range 1 1/4" (31 mm) - 2" (51 mm) standard
- T- and Lip-Strike with dust box
- stainless steel faceplate
- backsets: 2 3/8" (60 mm) or 2 3/4" (70 mm)
- functions: Passage (PAS), Privacy (PRI), full dummy (DUM), dummy left (DUML), dummy right (DUMR)
- available with UL-Latch
- 28° latch with attached face plate
- rate of satin stainless steel 304
- hub 5/16" (8 mm)
- door prep 2 1/8"
- available finishes: cosmos black, satin stainless steel, polished stainless steel, oil rubbed bronze

specification details

lever



round rose



square rose

